



RevTech Oil Pump Kits

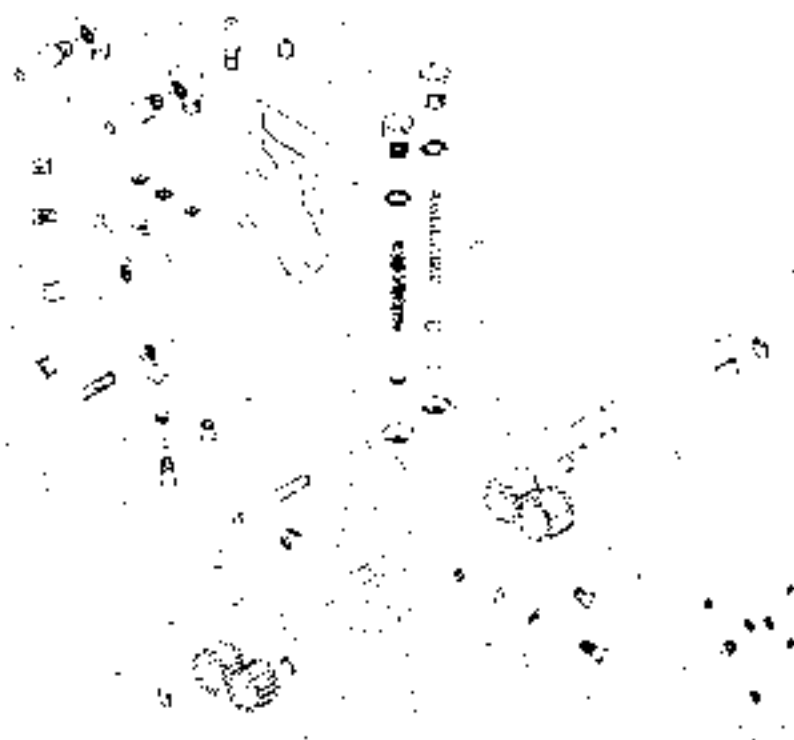
Features include an improved oil pressure regulation system that ensures perfect oil control to all areas of the motor, especially during initial start-up. All the oil line fittings and mounting hardware are chrome-plated. The oil pump body and cover are highly polished and have a redesigned smooth outer surface with counterbored holes for the sockethead mounting hardware. The oil feed line can be routed to the stock location at the top of the cover or directly to the pressure gears through a fitting located at the bottom of the cover. Engines 70-80 will require a small drilling operation, and 70-72 engines will also need a plugging step. Each kit includes all the snap rings, keys, gaskets, shaft, fittings, mounting hardware (1/4"-24 early-style and 1/4"-20 late-style) and detailed instructions.

20281 Revtech polish complete oil pump assembly. Fits all Evolution Big Twin models from 92-99

20275 Fits all Big Twin models from 73-91 (except Dyna Glide models)

20276 Fits all Big Twin models from 36-72 (except Flathead models)

Note: CC #'s 20275 and 20276 require CC #20840 (S&S oil pump drill fixture kit)



620298 Gasket, oil pump body to case. Pack of 10.

620299 Gasket, oil pump outer cover to body. Pack of 10.

ITEM#	PART#	QTY	DESCRIPTION	REPL. OEM #
1	n/a	EA	Pump body, polished 73-91	—
1A	n/a	EA	Pump body, polished 36-67	—
3	n/a	EA	Idler shaft	26327-68
4	54058	10	Pump body seal	26227-58
5	n/a	EA	Valve stop pin	239
6	20233	EA	Plug, 1/8"-27 NPTF	—
7	20234	EA	Elbow, 90°	26338-68
8	20235	EA	Fitting, 3/8" hose	63533-41
9	20236	EA	Fitting, front chain	—
10	20029	EA	Drive shaft	26346-70
11	20095	10	Drive shaft key	26348-15
12	20237	EA	Drive gear – return	26315-68A
13	20238	EA	Idler gear – return	26317-68A
14	n/a	EA	Drive gear – supply	26328-74
15	20240	EA	Idler gear – supply	26326-62A
16	54250	10	Retainer – outer	26348-36
17	n/a	EA	Spring – relief valve	26207-83

ITEM#	PART#	QTY	DESCRIPTION	REPL. OEM #
18	20242	EA	Plunger – relief valve	26400-82
19	19485	10	O-ring	11105
20	20243	EA	Cover screw	26263-80
21	n/a	EA	Spring – check valve	26262-80
21	n/a	10	Spring – OEM pumps only	26363-36
22	54254	10	Ball – check valve	8873
23	20261	EA	Gasket set	—
25	20245	EA	Adjusting screw	63614-72
26	20246	5	Lock nut, 10/32	7638
27	20247	EA	Plug, 1/16"-27 NPTF	—
28	n/a	5	Plug, 10-32 x 1/4"	—
29	n/a	10	Washer, adjuster	6156
30	20251	EA	Fitting, rear chain	—
31	20252	2	1/4-20 x 1 1/4 chrome sockethead	—
32	20253	4	1/4-20 x 2 1/2 chrome sockethead	—
33	n/a	2	1/4-24 x 1 1/4 chrome sockethead	—
34	n/a	4	1/4-24 x 2 1/2 chrome sockethead	—
35	54000	10	Retainer, inner	11002
36	20258	5	1/4"-20 sockethead set screw	—

- ★ APPAREL
- ★ SEATS & TOURING
- ★ FOOT CONTROLS
- ★ HAND CONTROLS
- ★ LIGHTING
- ★ ELECTRICAL
- ★ EXHAUST
- ★ INTAKE
- ★ ENGINE
- ★ GASKETS
- ★ TRANNY & CLUTCH
- ★ DRIVELINE
- ★ WHEELS, TIRES & BRAKES
- ★ FRAMES
- ★ FORKS & SHOCKS
- ★ SHEETMETAL
- ★ INSTRUMENTS & GAUGES
- ★ LUBRICANTS & CHEMICALS
- ★ TOOLS & EQUIPMENT
- ★ LAST MINUTE