



### Handlebar LED Unit by Pistor

Small LED units that can be mounted on the handlebar. The handlebar must be drilled for wiring and mounting. Equipped with four LED's: one yellow for turn signal control, one green for neutral, one blue for high beam and one red for Oil pressure. Available in different versions for 1" or 1 1/4" handlebars.

- 682174** For 1" handlebars, black
- 682172** For 1" handlebars, chrome
- 682170** For 1" handlebars, polished
- 682173** For 1 1/4" handlebars, chrome
- 682175** For 1 1/4" handlebars, black
- 682171** For 1 1/4" handlebars, polished



605782



605783

### Handlebar adapter sleeves for 1 1/4" Risers

These adapter sleeves allow you to run any 1" diameter handlebars on your OEM 1 1/4" risers found on all 07-Up Fatboy, Dyna Wide Glide and Some Screaming Eagle models and are available in either a chrome-plated or black finish. Sold as a set.

- 605782** Chrome
- 605783** Black



### HKC Riser Bolt Covers

Riser bolt covers in 3 different styles. Available in 3/8" and 1/2" diameter black aluminum or polished stainless steel. Sold in pairs

- 683493** 1/2" polished stainless steel, spades
- 683494** 1/2" polished stainless steel, iron cross
- 683496** 1/2" aluminum black, spades
- 683498** 3/8" aluminum black, spades
- 683499** 3/8" aluminum black, iron cross
- 683500** 3/8" polished stainless steel, iron cross
- 683495** 3/8" polished stainless steel, spades
- 681250** 1/2" aluminum, black
- 681253** 1/2" polished stainless steel



- 685630** Riser Bolt Cover Alu 1/2, Bones, black
- 685631** Riser Bolt Cover VA, 1/2, Bones, polish
- 685632** Riser Bolt Cover Alu 1/2, Tribal, black
- 685633** Riser Bolt Cover VA, 1/2, Tribal, polish

## HAND CONTROLS



### Custom Riser Extensions by Novello

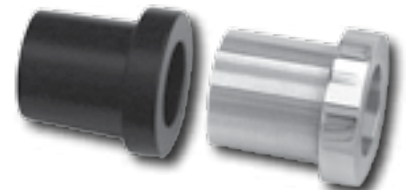
CNC-Machined from aluminum. Available in either a chrome-plated or black powder coated finish. Perfect for most bars/risers when you need to gain a little extra clearance for tanks and gauges. Sold in pairs.

#### For 1" Handlebars/Risers

- 647791** 1" extension, Chrome
- 647794** 1" extension, Black
- 647792** 1 1/2" extension, Chrome
- 647795** 1 1/2" extension, Black

#### For 1 1/4" Handlebars/Risers

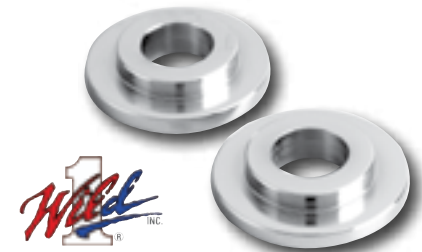
- 647796** 1/2" extension, Chrome
- 647799** 1/2" extension, Black
- 647800** 1" extension, Black
- 647798** 1 1/2" extension, Chrome
- 647801** 1 1/2" extension, Black



### Ritz Adapter for OEM Triple Trees

This item allows the mount of Big-Bone risers with inner wire routing to OEM H-D triple trees.

- 685991** Montageadapter poliert, Paar
- 685992** Montageadapter schwarz, Paar



### Handlebar Adapter Kit for Deuce Models by Wild 1, Inc.

Adapters fill in the recesses on Deuce model triple trees to mount most custom risers and bars with built in risers. Precision machined from steel and show chrome-plated. Sold in pairs.

- 10172** Fits all Deuce models from 00-12

- ★ APPAREL
- ★ SEATS & TOURING
- ★ FOOT CONTROLS
- ★ HAND CONTROLS
- ★ LIGHTING
- ★ ELECTRICAL
- ★ EXHAUST
- ★ INTAKE
- ★ ENGINE
- ★ GASKETS
- ★ TRANNY & CLUTCH
- ★ DRIVELINE
- ★ WHEELS, TIRES & BRAKES
- ★ FRAMES
- ★ FORKS & SHOCKS
- ★ SHEETMETAL
- ★ INSTRUMENTS & GAUGES
- ★ LUBRICANTS & CHEMICALS
- ★ TOOLS & EQUIPMENT
- ★ LAST MINUTE