

We are Chrome



Primo Offset Front Pulley Inserts

To permit custom motorcycle builders the freedom to offset the transmission by allowing the use of wider rear wheel/tire assemblies, the following offset inserts are available for Primo front pulleys. Special nuts and flanges (outside guide) are required. The 2.5" inserts fit Brute III front pulleys, the 3.5" inserts fit Brute IV pulleys.

Inserts

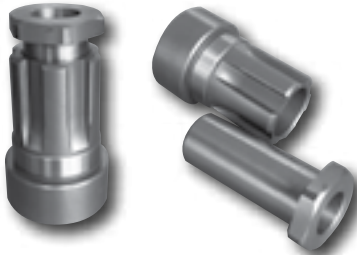
Offset	2.5" dia.	3.5" dia.	Motor Nut
0.50"	86145	86150	86156
1.00"	86146	86151	86157
1.25"	86147	86152	86158
1.50"	86148	86153	86159
2.00"	n/a	86154	86160

- 86144** Outside guide for offset pulleys
- 86155** Special motor nut washer



SCS Sprocket Shaft Extensions

Precision made sprocket shaft extensions for Big Twin models. Available in different length for several rear tire conversions and offset kits.



For 91-06 models

- 682457** Sprocket shaft extension 1/2"
- 682458** Sprocket shaft extension 1/4"
- 682459** Sprocket shaft extension 10 mm
- 682461** Sprocket shaft extension 20 mm
- 682462** Sprocket shaft extension 25 mm
- 682463** Sprocket shaft extension 3/4"
- 682464** Sprocket shaft extension 30 mm
- 682465** Sprocket shaft extension 40 mm

For 70-90 models

- 682466** Sprocket shaft extension 1/2"



FXSTD Deuce 180mm Fat Tire Kit by Vulcan Engineering

This simple kit allows you to run a 180mm tire on your 00-07 Deuce with no modifications to the frame or wheel. Kit includes a pulley spacer and alignment spindle. Easy install that can be done at your next rear tire change!

- 668253** 180 mm tire conversion for 00-07 FXSTD Deuce models



Swingarm Pivot Components

Manufactured from high-quality materials for all factory and aftermarket swingarms. Sold each.

For Softail Models from 86-99

- 95044** Swingarm pivot bearing and retaining clip for all Softail models from 84-99 (repl. OEM 9076)

For Dyna Glide Models

- 38022** Bushing kit for all models from 91-06
- 38023** Left spacer ONLY (repl. OEMs 47495-90, 47496-90)
- 38027** Bearing ONLY (repl. OEM 47082-81) also fits Sportster models from 82-03

For 5-Speed Rubber-Mount Models (except Dyna Glide Models)

- 75497** Rubber isolator ONLY for models from 86-08 (repl. OEM 47564-86)
- 75498** Rubber isolator ONLY for models from 82-85 (repl. OEMs 47553-79A, 47564-82)
- 38027** Bearing ONLY (repl. OEM 47082-81)



Swingarm Bumpers

For stock replacement or custom applications. Replaces OEM 11451, and fit all Softail models from 85-99.

Original Equipment Bumpers

These are Original Equipment parts.

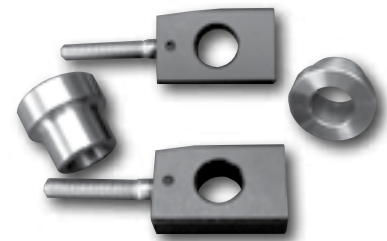
- 75190** Pack of 10

Aftermarket Bumpers

- 695002** Sold each

Ride-Str8 Rear Axle Adjusters For FLHT Models With 3/4" Diameter Rear Axles

Ride Safe, Ride-Str8. The Rear Axle Spacers and the Axle Adjuster Block Spacers, are designed to improve your HD- FLH /FLT motorcycle ride performance and to prevent damage to the swingarm tube wall by increasing the surface of contact and improving load distribution (Patent Pending). Stress Loads generated by different riding conditions may adversely affect the swingarm rear axle assembly by causing indentation of the OEM components into the thin walls of the swingarm tube. These indentations prevent proper adjustments to the Drive Belt and Wheel Alignment adjustments. Furthermore these indentations can amount to swingarm failure. When you up-grade your bike with Ride-Str8 components, ride performance shall dramatically improve by the increased load to surface of contact ratio, which prevents swingarm damage and swingarm deflection. Swingarm deflection contributes to poor riding performance or wobble.



- 696208** Axle adjuster/spacer kit for FLHT models from 94-97

FRAMES

14