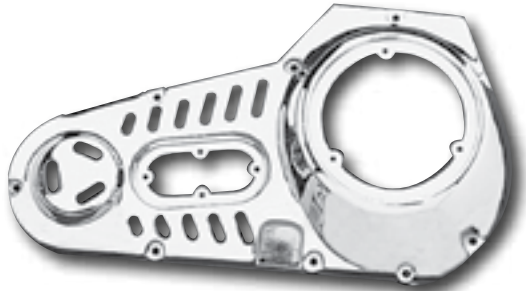




### 'Diamond Grill' Belt Drive Outer Primary Covers

Reinforced die-cast outer primaries for 4-speed Big Twins from 70-E84. FL cover has cast-in floorboard mounting tab. Show-chromed 'Diamond Grill' venting provides cooling for belt drive. Complete with chrome hardware, starter shaft bearing and bearing spacers.

- 28060** Fits 4-speed FX models from 71-E84
- 28067** Fits 4-speed FL models from 70-E84
- 15156** Replacement derby cover with screws



### Slotted Primary Cover for Big Twins

This vented cover provides additional cooling and a custom look. Starter bearing not included.

- 250703** Fits 4-speed Big Twins 70-E84 with primary belt drive



12266

### Covers for 'Tin' Style Outer Primary Covers

Enhance the look of your 'tin' style primary with these heavy-gauge covers.

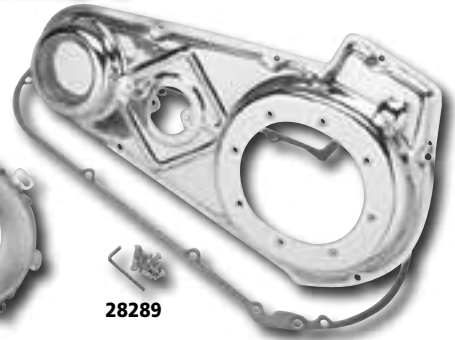
- 12266** Inspection cover
- 651331** Black dimpled inspection cover
- 651332** Black smooth inspection cover
- 12267** Derby cover
- 651330** Black derby cover
- 651315** Derby and inspection cover screws



651327



28282



28289

### Steel 'Tin-Style' Primaries for Electric-Start Big Twins

Chromed-steel or black powder coated, inner and outer 'tin-style' primaries for 4-speed Big Twins from 65-E84 with electric start and forward controls.

Note: Will not work with diaphragm clutches.

#### Outer Covers

- 28289** Fits models from 70-E84 chrome

#### Inner Cover Adaptor

Permits installation of early primaries (CCI #'s 28286 or 28287) on 70-E84 models when no electric starter is used.

- 28282** Chrome cover
- 651327** Black cover

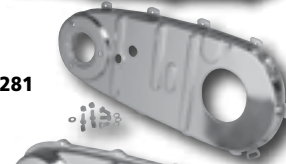


651328



651329

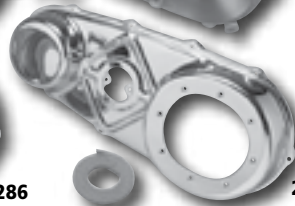
28281



28280



28286



28287

### Steel 'Tin-Style' Primaries for Kickstart Big Twins

Chrome-plated or black powder coated primaries for 4-speed Big Twins are accurate reproductions for Original Equipment applications. Mounting hardware included. 55-69 inner primaries can only be used if aluminum primary and electric starter is removed. 651317 may only be use on 55-69 models without compensator.

#### Outer Covers

- 28286** 36-54 chrome
- 28287** 55-69 chrome
- 651317** 36-64 chrome smooth
- 651328** 36-54 black
- 651329** 55-69 black

#### Inner Covers

- 28281** 36-54 chrome
- 28280** 55-64 chrome
- 651314** 65-69 chrome
- 651323** 36-54 black
- 651325** 55-64 black
- 651326** 65-69 black
- 651316** Inner Primary Screws (10pk)

- ★ APPAREL
- ★ SEATS & TOURING
- ★ FOOT CONTROLS
- ★ HAND CONTROLS
- ★ LIGHTING
- ★ ELECTRICAL
- ★ EXHAUST
- ★ INTAKE
- ★ ENGINE
- ★ GASKETS
- ★ TRANNY & CLUTCH
- ★ DRIVELINE
- ★ WHEELS, TIRES & BRAKES
- ★ FRAMES
- ★ FORKS & SHOCKS
- ★ SHEETMETAL
- ★ INSTRUMENTS & GAUGES
- ★ LUBRICANTS & CHEMICALS
- ★ TOOLS & EQUIPMENT
- ★ LAST MINUTE