



Nylatron 'Free Floating' Clutch Hub Lining

A rivetless, 'free-floating' clutch hub friction disc made from Nylatron for 4-speed Big Twins from 36-E84. This special nylon disc eliminates the riveted connection between the hub and the lining. It provides smoother engagement, eliminates 'chatter', and because it's self-lubricating, is ideal for belt drives.

18327 Clutch friction disc, Sold each



Clutch Hub Bearing Kit for Belt Drives

Replaces the stock bearings and retainer on the clutch hub and effectively eliminates the wobble. By doing this, the clutch basket will run true, preventing premature belt wear. The kit contains 53 '5211' steel bearings hardened for a lifetime of use, a tube of special grease, 3 spring retainers and a special bearing seal.

42108 Complete kit

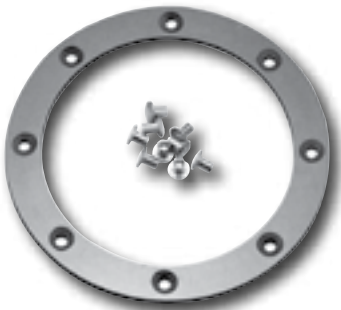


High-Performance Clutch Drum Retainer

Designed to hold the clutch drum in place. Provides increased releasing disc movement for a more consistent clutch disengagement. Cures the problem of "grabby" clutches on Big Twin models from 36-E84. Works with chain or belt drive.

070082 Complete kit

Note: 3-stud clutch hubs only.



High-Performance Clutch Hub Friction Disc

Made from Nylatron, a space-age nylon. Improves the performance of your 41-E84 Big Twin clutch whether run wet or dry. This part is unaffected by oil, and helps reduce 'clutch chatter' during engagement. Works well when installed with our clutch hub bearing kit (CC #42108).

42109 Friction disc and rivets



Long Roller Clutch Hub Bearing and Drum Retainer Kit

This long roller bearing kit provides smooth clutch operation by eliminating clutch drum wobble. It features our high performance drum retainer which increases releasing disc movement for a more consistent clutch disengagement. Works with 3-stud clutch hub only.

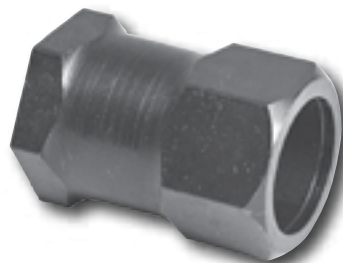
070086 Complete kit fits Big Twin models 41-E84



Clutch Hub Bearing for Sportster Models

Replacement bearing for clutch hubs on Sportster models from 71-E84.

070015 Bearing, clutch hub. Fits XL models 71-E84. Replaces OEM 37722-71



Clutch Hub Nuts

20047 For Big Twin models from 41-E84 (repl. OEMs 37496-41, 37496-65) sold each

56246 For Big Twin models from late 84-89 (repl. OEM 37496-84) sold each

17428 For Big Twin models from 90-97 (repl. OEM 37496-90) sold each

25307 Clutch hub nut seal (repl. OEM 12014) pack of 10



Clutch Hub Nut Kit for Big Twins

060724 Nut, seal and lock tab kit for Big Twins 41-E84 (repl. OEMs 37496-65, 12014 and 37503-41)



- ★ APPAREL
- ★ SEATS & TOURING
- ★ FOOT CONTROLS
- ★ HAND CONTROLS
- ★ LIGHTING
- ★ ELECTRICAL
- ★ EXHAUST
- ★ INTAKE
- ★ ENGINE
- ★ GASKETS
- ★ TRANNY & CLUTCH
- ★ DRIVELINE
- ★ WHEELS, TIRES & BRAKES
- ★ FRAMES
- ★ FORKS & SHOCKS
- ★ SHEETMETAL
- ★ INSTRUMENTS & GAUGES
- ★ MOUNTING BRACKETS & FITTINGS
- ★ TOOLS & EQUIPMENT
- ★ LAST MINUTE