



Muffler Clamp

A highly-polished muffler clamp made of .100" thick stainless steel strap. It's 1"-wide and has a 3 1/4" opening an exact duplicate of the OEM clamp used to support the mufflers on FL models for many years. Sold each.

11214 3 1/4" stainless steel muffler clamp (repl. OEM 65293-58)



Chrome Late Model Muffler Clamps

This two-piece clamp fits all FXRD, FLT, FLHT and FLHS 5-speed models from 85-93. The earlier version was a one-piece clamp which often broke during removal or installation. Each clamp includes all necessary chrome mounting hardware. Sold in pairs.

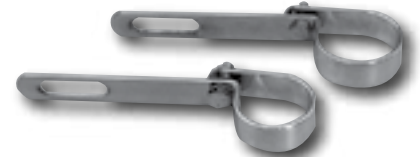
11427 Replaces OEMs 65722-85, 65722-85B



Chrome Heavy Duty 'P' Clamps

These heavy duty steel 'P' clamps are 1/8" thick and 7/8" wide. Includes pinch bolt with nut and lock washer. Sold each.

380151 Fits 1 3/4"-diameter pipes



Chrome 'P'-Clamps

Available in standard and heavy-duty styles. The standard clamps are made of cold-rolled steel (3/32"-thick, 3/4"-wide), while the heavy-duty clamps are 1/8"-thick and 7/8"-wide cold-rolled steel. The adjustable flat bar of the clamps measures approximately 6 1/2" and has 3/8" holes. Sold each.

Standard

11215 1 1/2"

11216 P-Clamps 1 3/4"

Heavy Duty

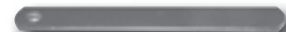
11211 1 1/2"

11212 1 3/4"

11213 2"



11225



11226



11227

Chrome Universal Flat Straps

Sold each.

11225 3"

11226 6"

11227 8"



Muffler Reducer Sleeve

Zinc-plated muffler reducer sleeve to adapt all 1 3/4" mufflers to 1 1/2" drag pipes.

84805 Sold each



Wide Aircraft-Style Chrome Exhaust Clamps

These custom clamps measure 11/16"-wide and are wider than standard clamps. They were made to provide a better seal and support the exhaust pipes to their flanges. Made from heavy-wall (1/8"-thick) cold-rolled and chrome-plated steel, they have a 1 7/8"-inside diameter which also makes them ideal for attaching mufflers to headpipes. Sold in pairs.

11234 Fit Sportster models from 57-85



Chrome Pipe and Muffler Clamps

Sold each.

11217 1 1/4"

11218 1 3/8"

11219 1 1/2"

11220 1 5/8"

11221 1 3/4"

11222 1 7/8"

11223 2"

11224 2 1/8"



Chrome Aircraft-Style Exhaust Clamps

Custom exhaust clamps made of heavy-wall (1/8"-thick), cold-rolled steel, complete with sockethead screws. Sold in pairs.

11101 Fit Sportster models from 57-85 (repl. OEM 65273-88T)

11233 Fit Panheads from 48-65 (repl. OEM 65274-88T)