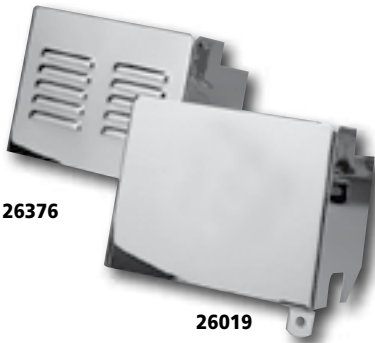




'Riveted' Battery Covers

Chrome-plated covers with extra non-functional buttonhead rivets for that high-tech "racers only" look. These covers complement our complete line of other 'Riveted' covers.

37258 Fits 4-speed FX models with electric start from 73-86 (except Softail models) and all Sportster models from 82-03



26376

26019

Battery Covers for 4-Speed FL Models

Show-chrome battery covers. Fit 4-speed FL models from 70-84. Available in two styles, choose the one which suits your taste.

26019 Plain
26376 Louvered



688077



26375



12296

Battery Covers for Sportster and FX Models with Electric Start

Complete with cell viewing window. Fit all FX 4-speed electric start models from 73-86 (except Softail models) and all Sportster models from 82-03.

12296 Chrome plain battery cover
688077 Black plain battery cover
26375 Chrome louvered battery cover
26506 24K gold wing emblem



91297

Battery Cover and Tray Kits

Available in two different configurations. We offer kits with covers only which include the side and top covers including the hold down strap, or with both covers, the strap and the tray.

Kit With Cover

91298 Fits 73-86 4-speed FX models (except FX Softail models)

Kit With Cover and Tray

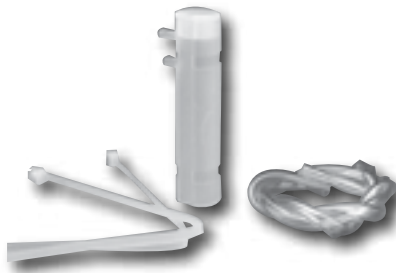
91297 Fits 73-86 4-speed FX models (except FX Softail models)



Stainless Steel Battery Hold-Down Straps

18-gauge stainless steel with stainless eye bolts and nuts.

25029 Fits FL models from 70-84 (repl. OEM 66383-70T)
25028 Fits electric start Sportster models from 67-78 (repl. OEM 66470-67)
25030 Fits FX and Sportster models with kick-start only from 70-78 (repl. OEM 66470-70T)
25031 Fits electric start 4-speed FX models (except Softail models) from 73-86 and all Sportster models from 82-97 (repl. OEM 66476-73T)
301155 Fits Sportster models from 98-03 (repl. OEM 66476-98)



Battery Overflow Catch Tank

Prevents acid overflow damage while still properly venting the battery. Includes a catch tank made from high-impact plastic which measures 4"-tall x 3/4"-thick, two reusable cable ties and a 24"-long piece of clear tubing.

18943 Fits all models



Battery Cushions

High-quality pure neoprene closed-cell foam rubber. Includes a 4" x 6 1/2" pad for the battery tray, and two 2" x 1" pads for the top cover.

18940 Fits FX and FXR models from 73-10 and electric start Sportster models from 79-03

Includes a 5 3/16" x 8" pad for the battery tray, and three 2" x 1" pads for the top cover.

18942 Fits 4-speed FL models from 65-84 and Sportster models with large electric start batteries from 67-78

18941 'Cut-your-own kit' for custom applications. Includes one 5" x 8" pad

18939 Fits Softail models from 84-96 (repl. OEM 66210-85B)

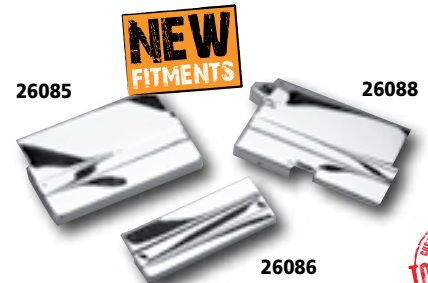
18929 Fits Softail models from 97-99



Chrome Battery Carrier Trays

Replacement chrome battery carriers Include battery pad, rubber mounting studs, brackets and all required mounting hardware.

26479 Fits electric start FX models from 73-78 (repl. OEM 66191-73)



26085



26088

26086



Chrome Battery Top Covers

26085 Fits 4-speed FL models from 65-84 (repl. OEM 66370-65T) CHROME

26086 Fits electric start 4-speed FX models (except Softail models) from 73-86 and all Sportster models from 82-96 (repl. OEM 66367-73T) CHROME

688084 Fits electric start 4-speed FX models (except Softail models) from 73-86 and all Sportster models from 82-03 (repl. OEM 66367-73T) BLACK

26088 Fits electric start Sportster models from 67-78 (repl. OEM 66369-67T) CHROME