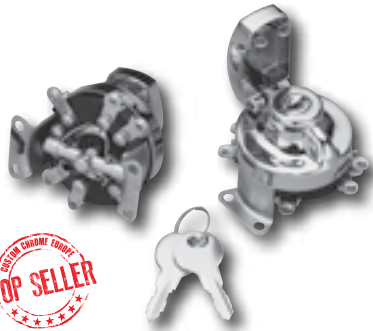


- ★ APPAREL
- ★ SEATS & TOURING
- ★ FOOT CONTROLS
- ★ HAND CONTROLS
- ★ LIGHTING
- ★ ELECTRICAL
- ★ EXHAUST
- ★ INTAKE
- ★ ENGINE
- ★ GASKETS
- ★ TRANNY & CLUTCH
- ★ DRIVELINE
- ★ WHEELS, TIRES & BRAKES
- ★ FRAMES
- ★ FORKS & SHOCKS
- ★ SHEETMETAL
- ★ INSTRUMENTS & GAUGES
- ★ LUBRICANTS & CHEMICALS
- ★ TOOLS & EQUIPMENT
- ★ LAST MINUTE

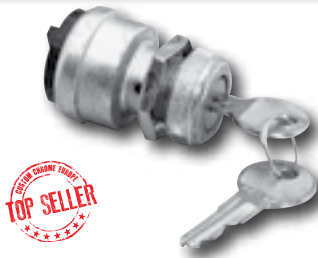


TOP SELLER

Heavy-Duty Ignition Switch

A top-quality, heavy-duty ignition switch for all Softail, FXWG and FL models from 73-95 (except Dyna Wide Glide models). Also compatible with all of our custom six post switch dash covers.

25540 Ignition switch (repl. OEM 71501-73T)



TOP SELLER

Three-Way Universal Ignition Switch

12289 Popular as an OEM replacement

TOP SELLER



Universal 1" Handlebar Combination Switch

High-lo beam switch with kill or horn button.
25991 Chrome



TOP SELLER



WIKRAM'S CYCLE CREATIONS

Custom Ignition Switch

Made of durable plastic which makes it water-proof. Features off, run and spring return start with push button feature. Can be used without a starter relay. Made in USA.

12203 Ignition switch, water resistant, flat switch style with spring-return start, 12-volts



Mini Ignition Switch

Two position mini ignition switch for custom applications. Includes two keys. Sold each.

688193 Mini ignition switch



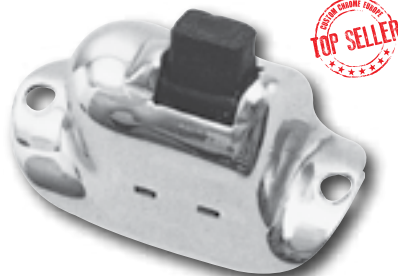
12943

Universal Switch Plates

Sold on a card of 12.

15103 Key switch bracket

12943 Single mount hole



TOP SELLER

Handlebar Light Switch

Mounts to any 1" handlebar. Duplicates original-style, inside handlebar-wired switch perfectly.

25534 Replaces OEM 71840-29T



Doss Switch Mount Housing

This ignition key switch housing is intended to be welded to your frame.

62344 Fits custom applications
Note: Must use CC #12286 ignition switch.

TOP SELLER



Chrome Ignition Switches

Fits Sportster models 75-77 and FX models 73-77.

12251 Ignition switch (repl. OEM 70124-75)

Fits FX models from 78-85, Sportster models from 78-93 and FXR models from 82-93.

12286 Ignition switch (repl. OEM 71425-77T)

TOP SELLER

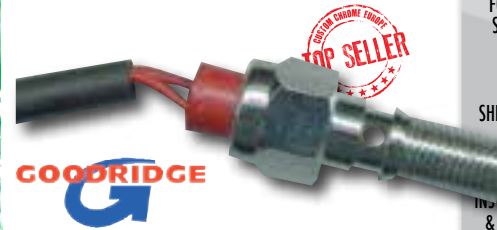


Handlebar Button Switch

Mounts to any 1" handlebar. Two-wire style, and designed to run wires through the handlebar for horn or starter.

25533 Replaces OEM 71800-26TA

TOP SELLER



GOODRIDGE

Brake Light Switch Banjo Bolt by Goodridge

Banjo bolt with pressure switch built into it. Simplifies the rear brake by eliminating the tee and pressure switch and creating a single brake line system. Sold Each.

14137 3/8"-24

14138 7/16"-24