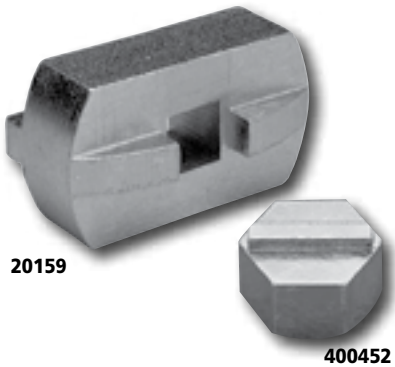




**Mainshaft Sprocket Locknut Wrench**

Use this wrench to install or remove the countershaft sprocket nut. Fits all Big Twin models from 36-E84.

**20160** Replaces OEM 94660-37A



**20159**

**400452**

**Primary Case Tools for Sportster Models**

Precise replica of OEM "Kent-Moore" primary plug tool. Used with standard 3/8" drive ratchet to install and remove slotted primary plugs on Sportster models from 71-85. Works on plugs with flat or concave bottoms. Sold each.

**20159** Fits the Original Equipment plug fitted to all Sportster models from 71-85

**400452** Fits Evolution Sportster models from 86-90



**JIMS Primary Locking Bars**

To lock primary for service work.

**20824** For 4-speed Big Twins and 5-speed Softail models

**20825** For 5-speed FXR and FLT models

**20826** For Sportster and Buell models from 91-14



**JIMS Diaphragm Clutch Spring Compressor Tool**

Used to release clutch spring for ease of retainer ring removal and installation. Fits Big Twins from 90-97.

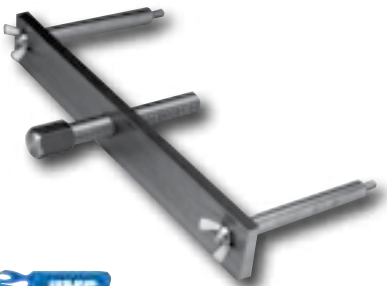
**20686** Replaces OEM 38515-90



**JIMS Clutch Lock Plate for Early Big Twins**

Locks clutch hub to shell to remove or install clutch hub nut. Most effective when used with primary locking bars sold below.

**20827** Fits Big Twins from 41-84



**JIMS Clutch Puller Tool for Sportster Models**

**24154** Fits 71-E84 Sportster models



**Motion Pro Clutch Tool**

Designed to hold clutch baskets, flywheels, gears, sprockets, etc. Jaws open to 5 inches wide. Made of medium carbon steel with hardened jaws. A very useful tool for holding any kind of mechanical work.

**5008008** Sold each



**Motion Pro Clutch Spring Compression Tool**

Made for compressing the diaphragm clutch springs on Big Twins from 90-97 and Sportster models from 91-97.

**5008137** Complete kit



**Clutch Hub Puller for Big Twins**

Pulls three-finger clutch hubs on all Big Twin models from 36-E84. Puller also includes four bolts for use with the puller to remove the clutch hubs on late-model Big Twins with diaphragm clutches thru 90.

**20006** Replaces OEM 95960-52C



**Clutch Hub Puller**

A tool that belongs in the toolbox of everyone that likes to turn his own wrenches on Big Twins. Made in America out of top-quality tool steel.

**20269** Fits Big Twins from 36-89