



Velona Speedo- and Tachometers

Available with polished stainless steel or black housing and white LED facing. The diameter is 60 mm x 45 mm depth. Each gauge comes with a V-shaped bracket in the kit. The speedos feature odometer, trip 1 + 2, voltmeter and clock on the LED display, 2 reset buttons on the back of the housing, selectable Km/h or mph scale. The Tachos displays temperature (°C or °F), max RPM, max Temperature, hourmeter and clock. Maximum RPM range is 20000, maximum rpm is memorized for recall on the LCD field.

- 619376** Velona Speedometer, white LED, polished
- 619377** Velona Tachometer, white LED, polished
- 653940** Velona Speedometer, white LED, black
- 653941** Velona Tachometer, white LED, black

RBS

RBS digital instruments

Handlebar clamp with combined LCD digital Instrument, speedometer or tachometer. And for all hightech freaks, double digital instruments, speedometer, tachometer. A great variation for each „custom bike“, either for pullback or straight riser (handlebar clamp for all Harley models from 73!) A masterpiece in CNC machine work, because handlebar clamp and speedo/tachometer are made of one piece. The handlebar clamp has in addition 3 holes for OEM control-lights. The LCD speedometer with current speed, odometer, trip kilometers which are adjustable by a simple 2 pushbutton program. In addition the speedo/tachometer have large bright blue LED figures, so you have always an eye on your speed. The tachometer has a special highlight: He shows not only the rpm but has also a temperature function. Very easy fitting and even easier service, all you need is included with the delivery, because all instruments have an outer pushbutton function. The attached speedo-sensor can also be replaced by an original OEM transmission sensor but therefore you have to use an adaptor which is separately available. The speedometer unit is offered in Km/h, the instrument-units are high-gloss polished, chromed or black anodized, suitable for all EVO and Twin Cam models.

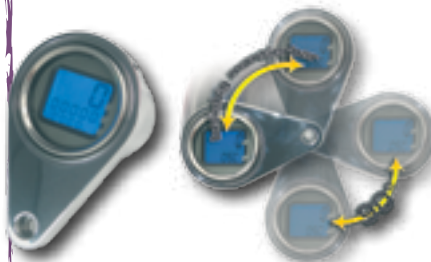


Flat Version

- 683179** RBS handlebar Top Clamp incl. Speedo, chrome
- 683180** RBS handlebar Top Clamp incl. Speedo, black

Angled Version

- 683181** RBS handlebar Top Clamp /Speedo polished Pullback
- 683182** RBS handlebar Top Clamp /Speedo chrome Pullback

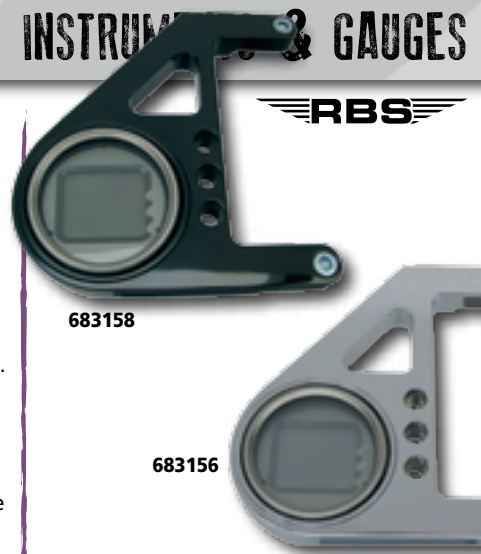


RBS

RBS digital instruments

The problem is well known: Where do I mount or place my speedometer/tachometer? It's that simple: Because we have a LCD Digital speedo/tachometer which can be easily mounted in all directions.

- 683177** Universal tacho/speedo, black



683158

683156

LCD Mini Digital Speedometer

Digital instruments and LED technology are important for custom bikes in the 21st century. Numerous customizers might have asked themselves the question again and again: „Where shall I install my speedometer?“ Just handlebars and fuel tanks are often the solution – but now RBS offers an alternative LCD speedometer unit, which fits perfectly at the rear (left side) rocker box cover. This LCD speedometer is not a bicycle part – finally a LCD speedometer was developed, which does not only show speed in large figures but also in a bright blue LED illumination. The mounting kit comes with 3 holes for the OEM indicator lights (indicator lights – oil pressure, high beam and neutral – need to be ordered separately). The LCD digital speedometer includes speed sensor, alternatively an adapter for digital mini speedometers can be mounted (from year 96). The speedometer displays speed, total kilometers and trip kilometers and can be simply programmed via a 2-switch mechanism. Available for evolution models (until 99) and for Twin Cam models (from 00). The entire speedometer unit is available either high gloss polished or – also brand new in our program – „high gloss“ black anodized.

Mini Speedo/Tacho for Evo models

- 683156** Fits EVO models, polished
- 683157** Fits EVO models, chrome
- 683158** Fits EVO models, black



RBS

RBS Pulse Converter

This pulse converter identifies the signal from the sensor of all HD transmissions up 1995 and changes it to the RBS LCD speedometers. The converter is very small and fits under every seat. The body is absolutely waterproof and you can use it for all 5 and 6 gear transmissions. It gives also the signal for the flashlight-reseter. Very easy and simple installation. Description in German and English is included to the delivery.

- 682899** Pulse Converter

- ★ APPAREL
- ★ SEATS & TOURING
- ★ FOOT CONTROLS
- ★ HAND CONTROLS
- ★ LIGHTING
- ★ ELECTRICAL
- ★ EXHAUST
- ★ INTAKE
- ★ ENGINE
- ★ GASKETS
- ★ TRANNY & CLUTCH
- ★ DRIVELINE
- ★ WHEELS, TIRES & BRAKES
- ★ FRAMES
- ★ FORKS & SHOCKS
- ★ SHEETMETAL
- ★ INSTRUMENTS & GAUGES
- ★ LUBRICANTS & CHEMICALS
- ★ TOOLS & EQUIPMENT
- ★ LAST MINUTE