



Dash Switch Decal

Fits FL models from 68-84, FX models from 71-72, FXWG models from 80-86, and Softail models from 84-99. Sold in pack of 5.

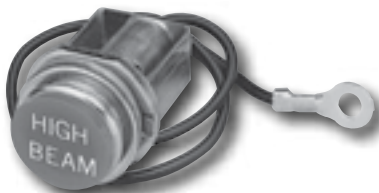
310136 Replaces OEM 71300-79



Odometer Reset Cable for FX Models

Complete odometer reset cable assembly for all 4-speed FX models (except FXWG) 73-84. Includes chrome knurled knob, rubber grommet, washer, spring and flexible cable. Fully assembled, ready to install.

26445 Replaces OEM 67210-73T



Hi-Beam Indicator Lamp

Original style, multi-piece high beam indicator lamp assembly with replaceable bulb included. Fits FX models from 73-74, as well as Sportster models from 68-73. Can also be used to replace the one-piece 'throwaway' indicator lamp used on FX models from 75-85.

26444 Replaces OEM 67891-68



Trim Rubber for Low Rider Dash

Thick style, black rubber trim for FX dual gauge housings. Neatly fills the open space between the tanks and the instrument housing while isolating the gauges from vibration.

26338 Replacement trim rubber (repl. OEM 61401-82)

26356



310154



26352

26353

26354

Replacement Lenses for Fat Bob Dash Covers

Can be used to restore Original Equipment dashes or as replacement parts for CC dashes. Sold each.

- 26356** Cateye red lens-plastic
- 26354** 3-light dash red lens (2 used) - plastic
- 26353** 3-light dash blue lens (1 used) - plastic
- 26352** 2-light dash red lens - plastic
- 310154** Cateye dash lens, green



Instrument Light Socket Assemblies

OEM style replacement light socket assemblies include socket with wire and bulb. Available for most Big Twins and Sportster models 76-97. Sold in 5 packs.

310113 Steel, 1 wire type



Chrome Skull Nut Cover

Made in the U.S.A. by Wild 1 Mfg. to cover the hardware that holds the dash in place. Fits include red rhinestones for the eyes. Fits the cast dash on models without a dash-mounted choke cable.

19971 Sold each



651239



651240

Early Dash Mount Hardware by Paughco

Center stud and top bolt for most Big Twin models from 47-67 or custom applications where the choke wire is not routed through the dash. Made in the U.S.A.

651239 Chrome-plated dash center bolt for 47-67 models (OEM 71075-47)

651240 Dash base stud for 47-67 models (OEM 71067-47)



Dash Center Mounting Bolt and Stud

Includes chrome-plated center screw with stud and hardware. Fits Big Twins from 47-67 as original part replacement or can be used on custom applications where choke wire is not brought through dash.

26162 Sold each



Chrome Dash Cover Screws

Complete 4-piece set of chrome plated, buttonhead panel screws. Fit all Low Rider and FXEF dashes 77-84.

26441 Set of 4