



JIMS Complete Transmission Rebuild Kits

You know the convenience, and time saved by ordering just one part number that comes with all the necessary gaskets, seals, locks and bearings you will need to completely rebuild a transmission all at one time.

- 619294 07-14 FLH
- 619295 06-14 FXD
- 619296 07-14 FXST



Oil Seal Kit Transmission Sprocket by James Gaskets

667123 84-94, FLT, FXR, Softail, Dyna



Oil Seal Kit Transmission Sprocket by James Gaskets

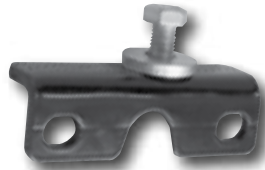
667124 L94-06, FLT, FXR, Softail, Dyna



35636 35637 35638

Transmission Case Bottom Studs
Standard and two oversized sizes for Big Twin models from 36-83 (parkerized finish). Sold in sets of 4.

- 35636 3/8"-16 x 3/8"-24
- 35637 7/16"-14 x 3/8"-24
- 35638 1/2"-13 x 3/8"-24



The '5th Point' by Pistor

This bracket allows you to mount an offset transmission with all required mounting screws.

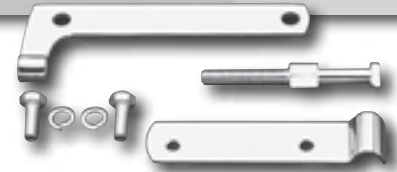
686662 Sold each



Transmission Adjusting Kit

Permits accurate alignment and adjustment of the transmission mainshaft. The transmission is held by the four jam nuts.

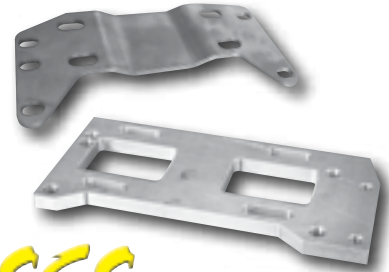
15999 Fits 4-speed Big Twins from 58-86 (except Softail models)



Transmission Adjusting Kit

Provides for a more accurate and positive adjustment. Fits Big Twin models 36-64 and later customs that have converted to steel inner and outer primary covers.

250904 Sold as set



SCS Transmission Base Plates

Transmission base plates for 4- and 5-speed models. They are available with different offset measurements to fit wide tire applications. Sold each.

For 4-Speed models

- 682440 10 mm offset
- 682441 15 mm offset
- 682442 20 mm offset
- 682443 25 mm offset

For 5-Speed models

- 682444 10 mm offset
- 682445 15 mm offset
- 682446 20 mm offset
- 682447 25 mm offset
- 682448 30 mm offset
- 682449 40 mm offset



Santee 5-Speed Transmission in a 4-Speed Rigid Frame Mounting Plate

The master minds at Santee have came up with a transmission mounting plate that allows you to mount a 5-speed transmission for Softail models in a 4-speed rigid frame. This will allow you to build that 'Old School' scooter you have been thinking of but with some 'New School' tricks.

650139 Raw steel mounting plate

Note: This conversion will require you to update your 4-speed primary and starter to those fitted to 5-speed Softail models. Additionally, if you use a 86-89 Softail transmission, you will need to use a 86-89 clutch hub, and if you use a 90-99 transmission, you will need to use a matching clutch hub.