



Joker Machine 6-speed Hydr. Clutch Actuators

Completely CNC machined from a solid block of billet, polished, then given a top quality chrome plated finish! The thickness is only 1 3/4" to give your bike clean lines and eliminate exhaust pipe clearance issues. Includes all necessary chrome mounting hardware and an AN-3 hydraulic line fitting that exits the clutch body without the bulkiness of a banjo fitting found on most competitor units. DOT5.

New trick feature:

Super easy line bleeding is capable due to the recessed „Speed Bleeder“ type bleed screw, just loosen screw half a turn, pump the master cylinder lever until adequate pressure is achieved, then re-tighten.....done! Internals include a „hard anodized“ piston for smooth action and long life. Fits 06-14 FXD, and 07-14 ST, FLT models.

682336 6-speed hydraulic clutch actuator, finished for Big Twins 07-14, Dyna 06-14 (DOT5 only!)

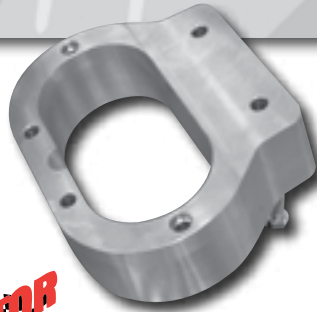
682337 6-speed hydraulic clutch actuator, smooth for Big Twins 07-14, Dyna 06-14 (DOT5 only!)



Rebuffini Ellipse Clutch Housing

One piece billet clutch housing is a perfect complement for our hydraulic clutch master cylinder. Our 5 speed housings fit on all Big Twin 5 speed from 87-06 and all after market 6 speed RSD transmissions (such as RevTech).

685308 Ellipse clutch housing big twin 87-06 5-speed polished



Transmission Sidecover Spacers by Pistor

Excellent solution for all bikes with offset engine and transmission. Fill up the gap on the right side with this beautiful aluminum 1" -thick side cover spacer. Available in black, chromed or polished. Gasket, clutch extension and mounting hardware are included.

681091 Chrome

681090 Polished



Kustom-Tech Tranny Spacer for Hydraulic 6-Speed Tranny

This spacer allows the installation of a hydraulic clutch cover on six speed transmissions.

696059 6-Speed Tranny Spacer



Hydraulic Clutch Kit or Big Twins from 96-06

This user-friendly kit is a great way to convert any Big Twin or custom from the ball and ramp style clutch to hydraulic. It comes complete with chrome clutch master cylinder assembly, chrome side cover and clutch pushrod. DOT5.

663531 Complete kit

663532 Hydraulic master cylinder ONLY

Note: To properly connect your hydraulic clutch line we suggest to use CC# 614977 or 614978 adapters.



663545



663546

Hydraulic Clutch Kits

This hydraulic clutch kit is unique in that you use your existing transmission end cover. The kit includes a hydraulic actuator that replaces the OEM ball and ramp in the Big Twin application. For the Sportster fitment there is a small salve master cylinder with a rod connecting to the stock OEM clutch cable coupling unit. These kits make the lever pull up to 40% easier than a stock cable. Includes chrome 96-06 style handlebar master cylinder, hydraulic line and fittings.

663545 Fits Big Twin models 96-06 (except 06 Dyna Glide models) with 80" long hose

663546 Fits Sportster models 96-06 with 57" long hose

663547 Rebuild kit for 663545 and 663546



GOODRIDGE

Goodridge Hydraulic Clutch Adapters

These adapters permit the use of universal brake lines to be used to install or convert your ball and ramp style clutch cover to a hydraulic clutch cover. Sold each.

614977 Straight

614978 Bent

- ★ APPAREL
- ★ SEATS & LURING
- ★ FOOT CONTROLS
- ★ HAND CONTROLS
- ★ LIGHTING
- ★ ELECTRICAL
- ★ EXHAUST
- ★ INTAKE
- ★ ENGINE
- ★ GASKETS
- ★ TRANNY & CLUTCH
- ★ DRIVELINE
- ★ WHEELS, TIRES & BRAKES
- ★ FRAMES
- ★ FORKS & SHOCKS
- ★ SHEETMETAL
- ★ INSTRUMENTS & GAUGES
- ★ LUBRICANTS & CHEMICALS
- ★ TOOLS & EQUIPMENT
- ★ LAST MINUTE